

The Pleura

The Pleura

- A mesothelial surface lining the lungs and mediastinum
- Mesothelial cells designed for fluid absorption
- Hallmark of disease is the effusion

Pleural Effusion

- Transudate (low protein)
 - cardiac failure
 - hypoproteinaemia
- Exudate (high protein)
 - pneumonia
 - TB
 - connective tissue disease
 - malignancy (primary or metastatic)



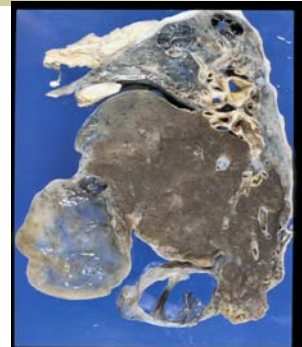
Purulent Effusion

- Full of acute inflammatory cells
- Empyema
 - Can become chronic

Pneumothorax

- Air in pleural space
- Trauma
 - Rupture of bulla

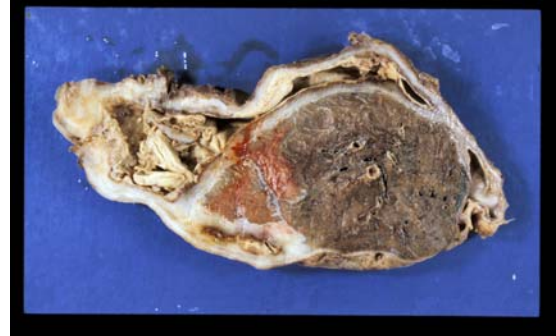
Large bullae



Pleural Neoplasia

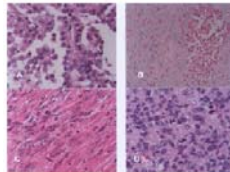
- Primary
 - benign (rare)
 - malignant mesothelioma
- Secondary
 - common (adenocarcinomas - lung, GIT, ovary)

Mesothelioma

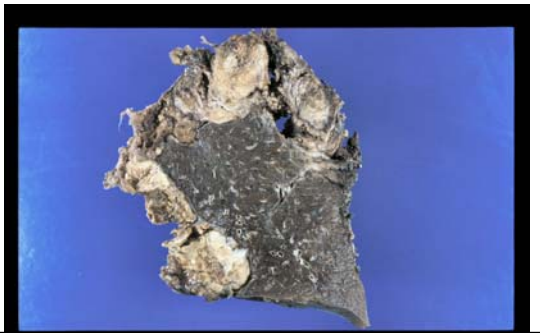


Pleural biopsy - mesothelioma

- Mixed spindle cell (mesenchymal) and epithelial differentiation



Metastases in Pleura



Differential diagnosis of malignant effusions.....

- Cytology, biopsy
- Difficult
- Immunohistochemistry for lineage specific antigens may help
- Medicolegal importance