

Gastrointestinal system

The mouth

- Teeth (caries)
- Action of *Streptococci* on dietary sugars
- Leads to pulpitis and abscess



© Elsevier Ltd. Underwood: General and Systemic Pathology www.studentconsult.com

Oral mucosa

- Squamous epithelium
- Subject to infection
 - Herpes virus
 - Candida
 - Hairy leukoplakia (HIV associated – caused by EBV)



Oral cancer

- Associated with tobacco (chewing) and alcohol
- Clinical preinvasive lesion (leukoplakia)
- Squamous carcinoma
- Poor prognosis unless detected early



© Elsevier Ltd. Underwood: General and Systemic Pathology www.studentconsult.com

Sites of oral cancer

- Floor of mouth
- Side of tongue
- Palate
- Back of tongue

“Field cancerisation”

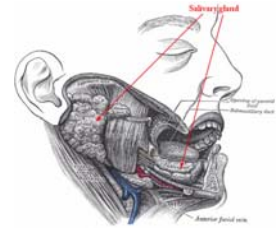
- High rate of multifocal tumour
- 5 year survivor has a 35% chance of developing a new primary tumour

Salivary glands

- Sialadenitis
 - Viral (mumps)
 - Bacterial, associated with:
 - Dry mouth
 - Duct obstruction by stones

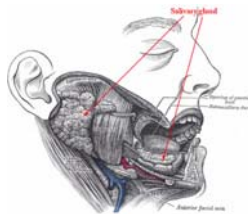
Salivary tumours

- Benign:
 - Pleomorphic adenoma
 - Warthin's tumour
- Malignant:
 - Muco-epidermoid tumour
 - Adenoid cystic carcinoma
 - Adenocarcinoma



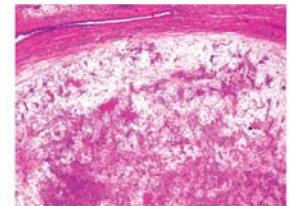
Tumours

- In the bigger glands most tumours are benign
- More often malignant in minor salivary glands



Pleomorphic adenoma

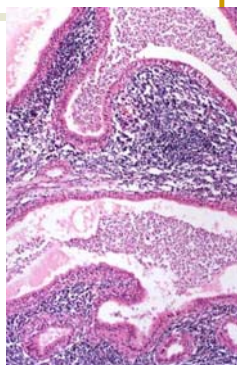
- Most common salivary tumour
- Mucoïd "cartilagenous" stroma with epithelial proliferation
- Prone to local recurrence



© Elsevier Ltd. Underwood: General and Systematic Pathology www.studentconsult.com

Warthin's tumour

- Columnar epithelium with lymphoid stroma
- Benign



Adenoid cystic carcinoma

- Epithelial cell islands with microcystic change
- Very locally infiltrative (especially around nerves) but metastasises late

